

Area of Application:  
Bench mounted  
Water

Max. working pressure 10 bar

Temperature range 5°C-65°C

Details:  
Rubber sealed headwork open/close 2x360°  
3-Zone colour, acc. to EN13792:2002

Removable nozzle

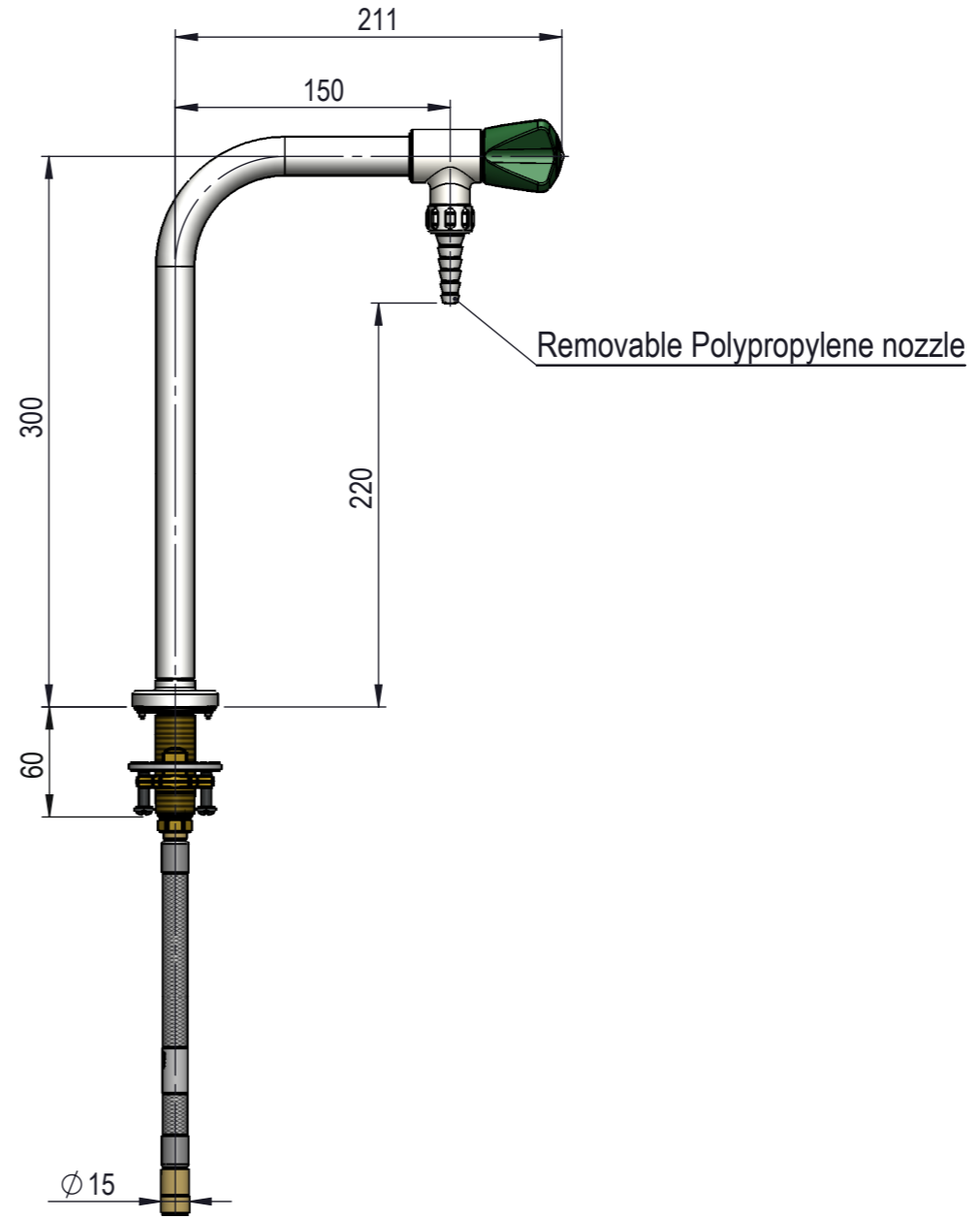
Materials in media contact:

Brass  
Rubber, EPDM  
Silicone based lubricant  
PP  
SPX (Soft PEX)

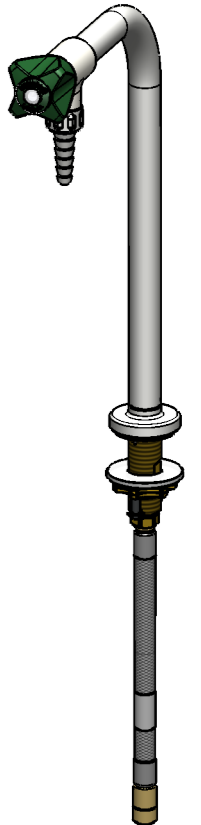
Mounting:  
M30x1,5 nut with locking pins, O-ring and washer (See 94G0232)

Inlet / outlet connection:  
DN8 hose with Ø15mm inlet  
DIN 12 898 hose nozzle

Polypropylene handle

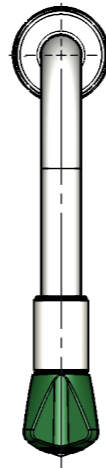


Removable Polypropylene nozzle



MEDIA CODE XX FOR WATER  
ONE MEDIA FITTING  
ACCORDING TO EN 13792  
\*Model shown for WPC

Media	Media description	Media code XX
WPC	Water potable cold	01
WPH	Water potable hot	02
WCF	Water coolant, feed	05
WCR	Water coolant, return	06
WNC	Water non-potable, cold	07
WNH	Water non-potable, hot	08
WRC	River water cold	33



Description: 1-Valve, Bench mounted, 1-Hole, ., Hose connection

						Media: Water
						Comments:
						Drawing type: Customer drawing
						Weight: Kg
Rev.	Pos.	Date	TM No.	Design by	Drawn by:	Change:
						Designed by: BJP
						Drawn by: MWA
						Released on TM No.
						Date (DD-MM-YY): 11-09-20
						Format: A3
						Drawing No.: XL3310382XX-14H

**brownall**  
Labtap®

This drawing is our property and cannot be given to a third party, copied or otherwise used without our permission. BROEN-LAB A/S.  
Revision 14-01-2011