



TEST REPORT

Applicant : Dongguan Heng Fu plastic products Co., LTD
Address : Room 201, Building 2, No. 9, Yifeng Yinling Road, Zhangmu Town, Dongguan City, Guangdong Province

Report on the submitted sample said to be:

Sample name : Liquid floor tiles
Manufacture : Dongguan Heng Fu plastic products Co., LTD
Address : Room 201, Building 2, No. 9, Yifeng Yinling Road, Zhangmu Town, Dongguan City, Guangdong Province
Sample received date : November 07, 2023
Testing period : November 07, 2023 ~ November 16, 2023
Report No.: : UTT202311419S

Result Summary:

TEST REQUESTED	RESULT
A-As specified by client, to determine the Cadmium content in the Submitted sample(s) with reference to entry 23, Annex XVII of the REACH Regulation (EC)No 1907/2006 As specified by client, to determine the Polycyclic Aromatic Hydrocarbons (PAHs)	Pass
B- content in the Submitted sample(s) with reference to entry 50, Annex XVII of the REACH Regulation (EC)No 1907/2006	Pass
C- As specified by client, to determine the phthalates content in the Submitted sample(s) with reference to entry 51 and entry 52, Annex XVII of the REACH Regulation (EC)No 1907/2006	Pass

***** FOR FURTHER DETAILS, PLEASE REFER TO THE FOLLOWING PAGE(S) *****

Signed for and on behalf of

UTT

Prepared by(Engineer) :

Nike Huang

Joseph Zhang



Approved(Manager) :

**Tested part(s):**

(1) Transparent plastic

Results:**A. Cadmium(Cd) content****Test method:** With reference to EN 1122:2001, analysis was performed by Inductively Coupled Plasma-Optical Emission Spectrometer (ICP-OES).

Item	Unit	MDL	Results	Limit
			1	
Cadmium(Cd)	mg/kg	10	N.D.	100

Note:

- N.D. = Not Detected or less than MDL
- MDL = Method Detection Limit
- mg/kg = ppm

**B. Polycyclic Aromatic Hydrocarbons (PAHs) content****Test Method:** With reference to IEC 62321-10:2020, analysis was performed by GC-MS.

Test Items	CAS No.	Unit	MDL	Results	Limit (See Remark)	
				1	Category 1	Category 2
Benzo(a)pyrene(BaP)	50-32-8	mg/kg	0.01	N.D.	<1	< 0.5
Benzo(e)pyren(BeP)	192-97-2	mg/kg	0.01	N.D.	<1	< 0.5
Benzo(a)anthracene(BaA)	56-55-3	mg/kg	0.01	N.D.	<1	< 0.5
Chrysene(CHR)	218-01-9	mg/kg	0.01	N.D.	<1	< 0.5
Benzo(b)fluoranthene(BbF)	205-99-2	mg/kg	0.01	N.D.	<1	< 0.5
Benzo(j)fluoranthene(BjFA)	205-82-3	mg/kg	0.01	N.D.	<1	< 0.5
Benzo(k)fluoranthene(BkF)	207-08-9	mg/kg	0.01	N.D.	<1	< 0.5
Dibenzo(a,h)anthracene(DBA)	53-70-3	mg/kg	0.01	N.D.	<1	< 0.5
Total 8 PAHs content	/	mg/kg	/	N.D.	/	/

Note: It's be long to Category1: Rubber or plastic parts of products indented to contact with Human skin or mouth for along or repeated short-time.

Category1:

Rubber or plastic parts of products indented to contact with human skin or mouth for along or repeated short-time.

The scope of controlled products includes bu tis not limited to the following products

Category2:

- Sports equipment such as bicycles, golf clubs and rackets;
- Household appliances, trolley sand walking supports
- household tools
- clothing, footwear, glove sand sportswear;
- watchstrap, wristband, mask and headband

Toys, including children's sports equipment and children's supplies

Note:

- N.D. = Not Detected or less than MDL
- MDL = Method Detection Limit
- mg/kg = ppm
- / = Not Regulated

**C. Phthalates content**

Test method: With reference to IEC 62321-8:2017, analysis was performed by gas chromatographic-mass spectrometer (GC-MS)

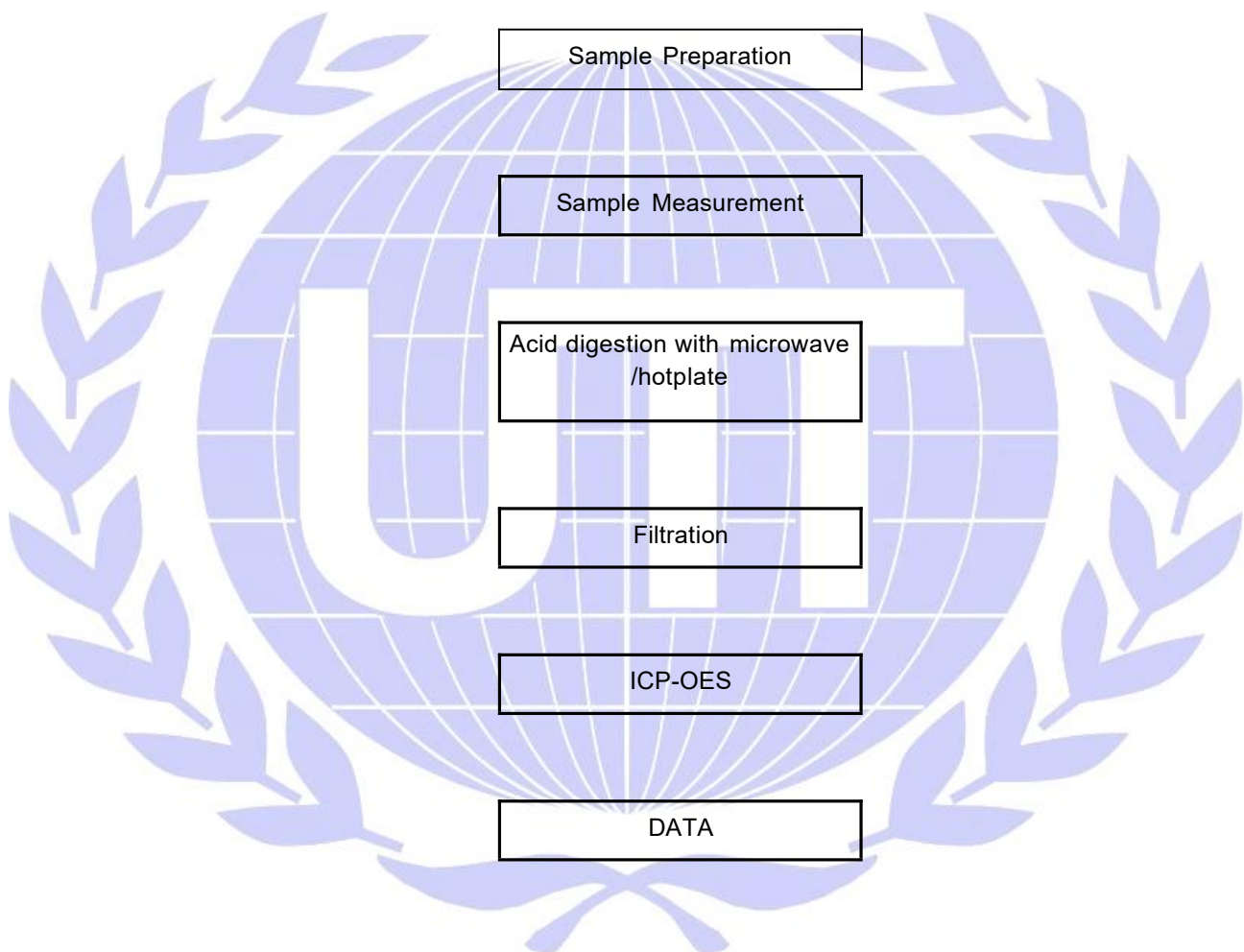
Test Item	CAS No.	Unit	Results	MDL	Limit
			1		
Di-(2-ethylhexyl) phthalate (DEHP)	117-81-7	%(w/w)	0.011	0.005	/
Di-butyl phthalate (DBP)	84-74-2	%(w/w)	N.D.	0.005	/
Butyl benzyl phthalate (BBP)	85-68-7	%(w/w)	N.D.	0.005	/
Di-isobutyl phthalate(DIBP)	84-69-5	%(w/w)	N.D.	0.005	/
Total(DEHP+ DBP+ BBP+ DIBP)	/	%(w/w)	0.011	/	0.1
Di-isononyl phthalate (DINP)#	28553-12-0 68515-48-0	%(w/w)	N.D.	0.005	/
Di-iso-decyl phthalate (DIDP)#	26761-40-0 68515-49-1	%(w/w)	N.D.	0.005	/
Di-n-octyl phthalate (DNOP)#	117-84-0	%(w/w)	N.D.	0.005	/
Total(DINP##+DIDP##+ DNOP#)	/	%(w/w)	N.D.	/	0.1

Note:

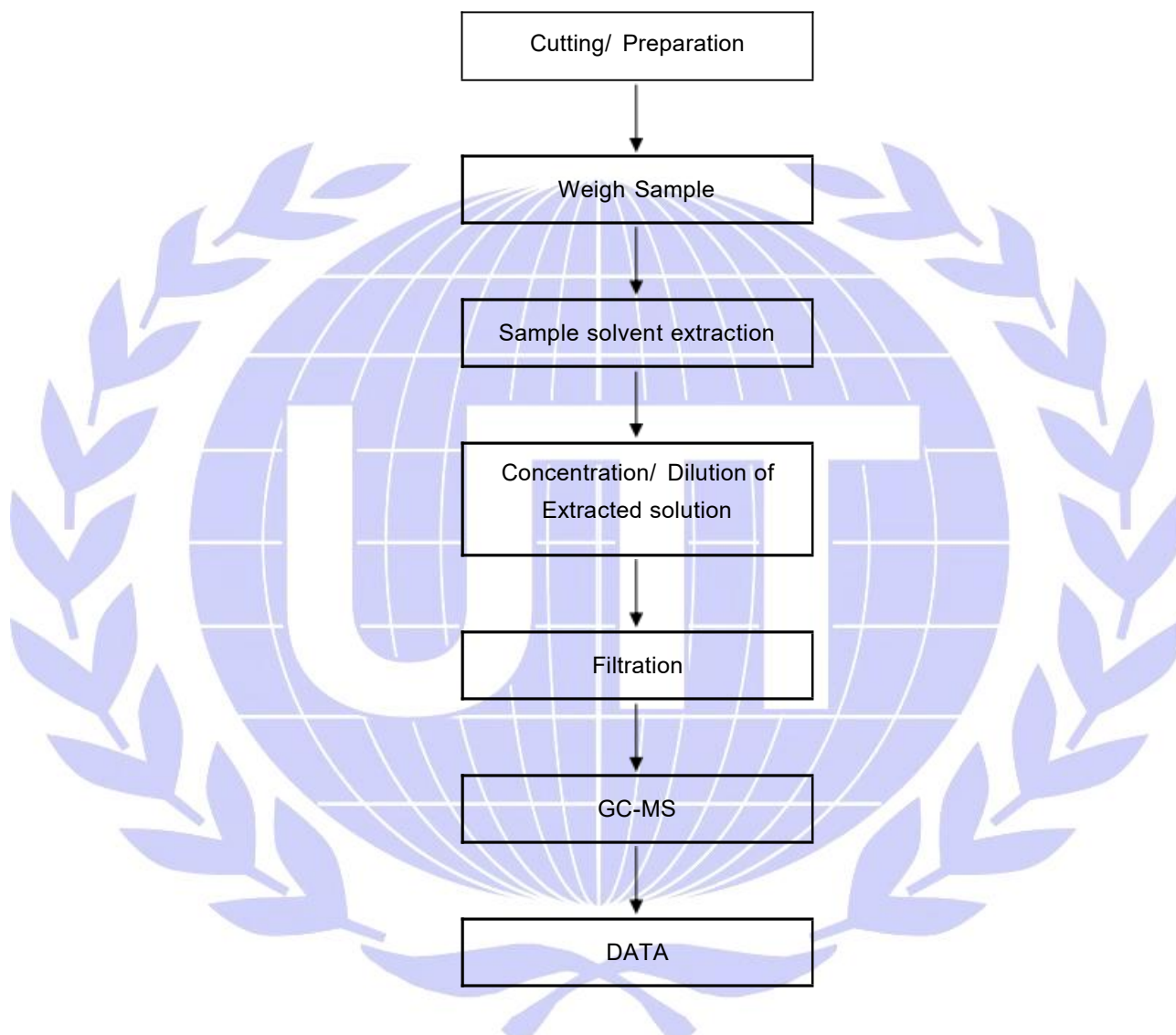
- N.D. = Not Detected or less than MDL
- MDL = Method Detection Limit
- % = percentage by weight, 0.0001% = 1 mg/kg, ppm = mg/kg
- / = Not Regulated
- # = The test items are not authorized by CNAS.
- Tested part(s) was/were specified by client
- Flow chart appendix is included
- Photo appendix is included

Appendix

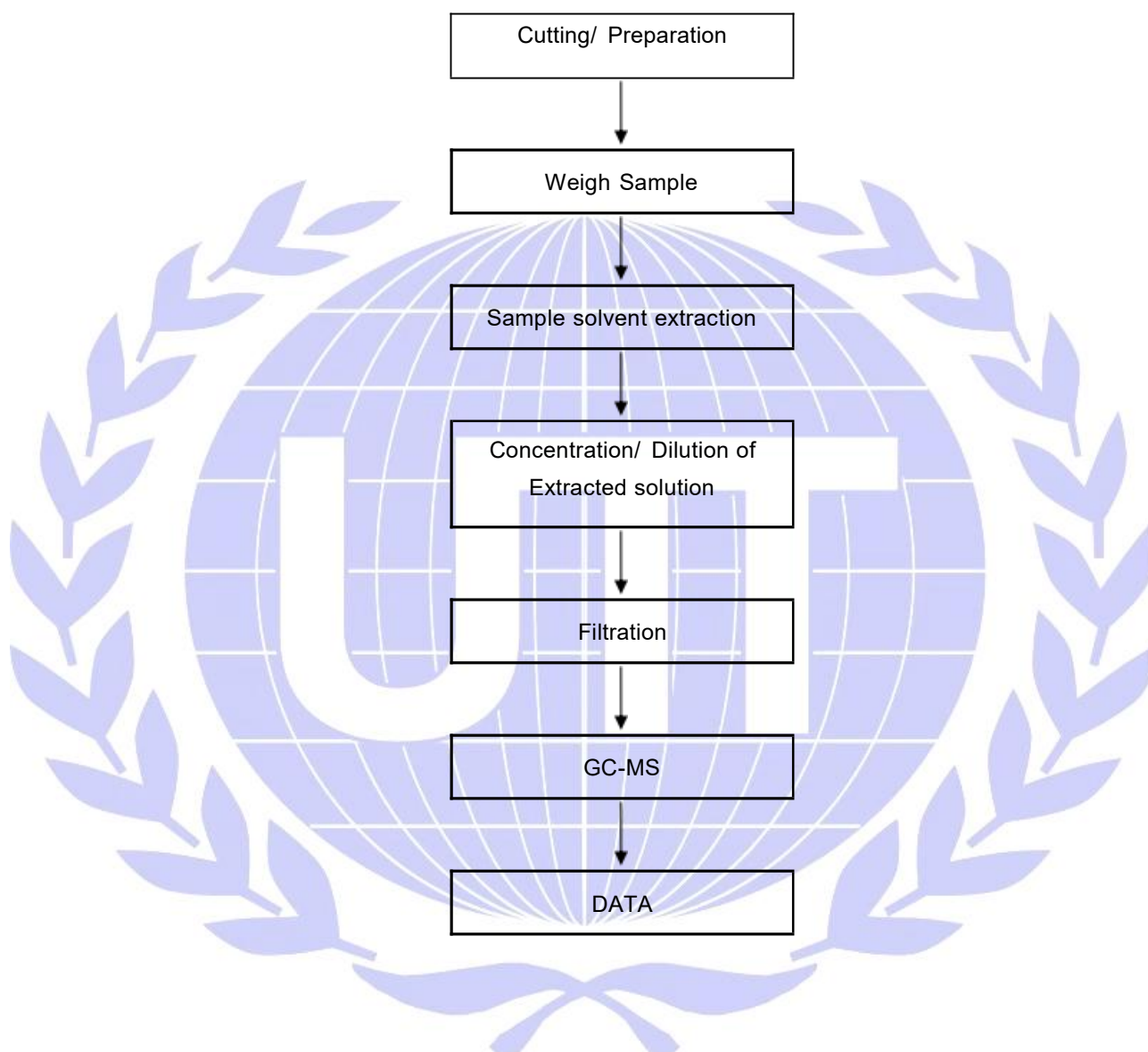
Cadmium Testing Flow Chart



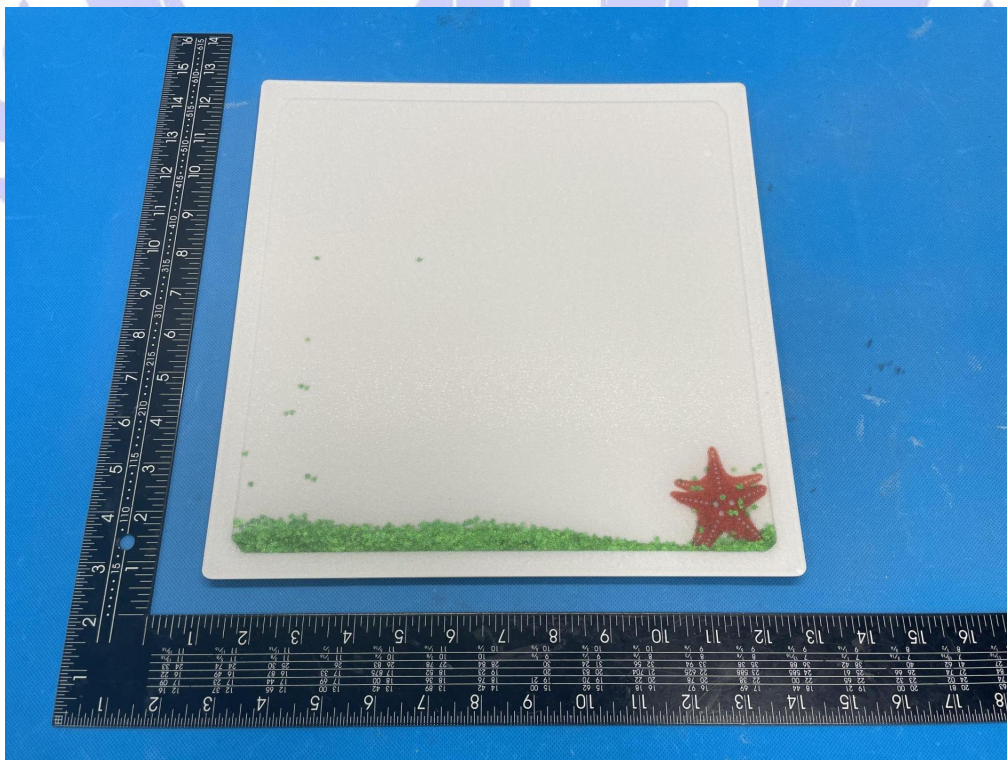
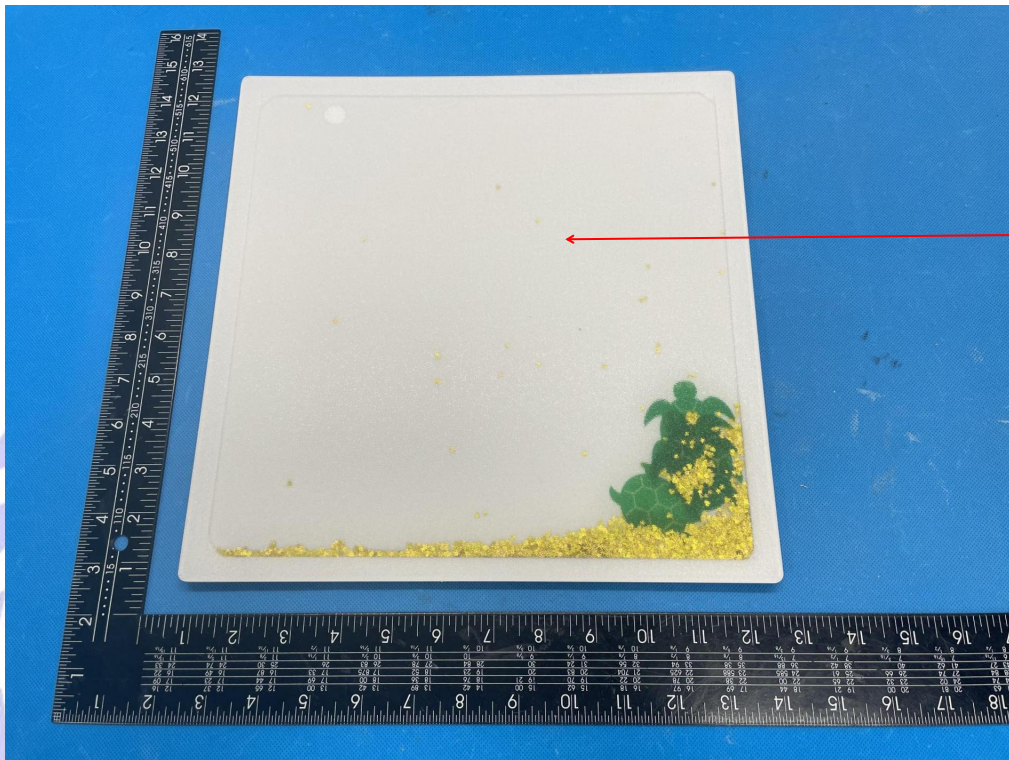
Polycyclic Aromatic Hydrocarbons Testing Flow Chart

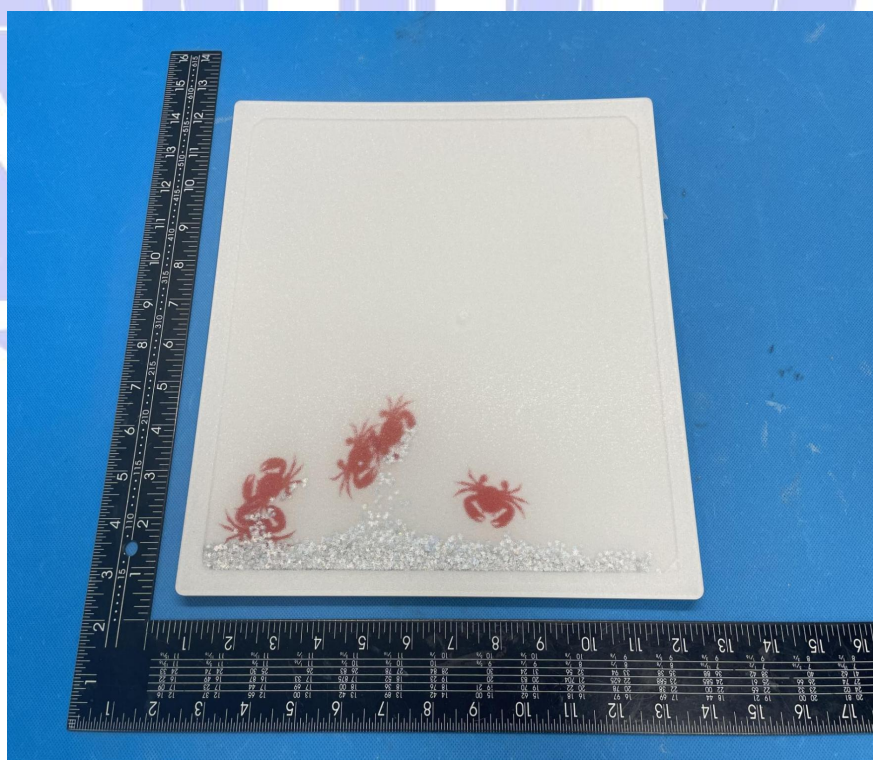
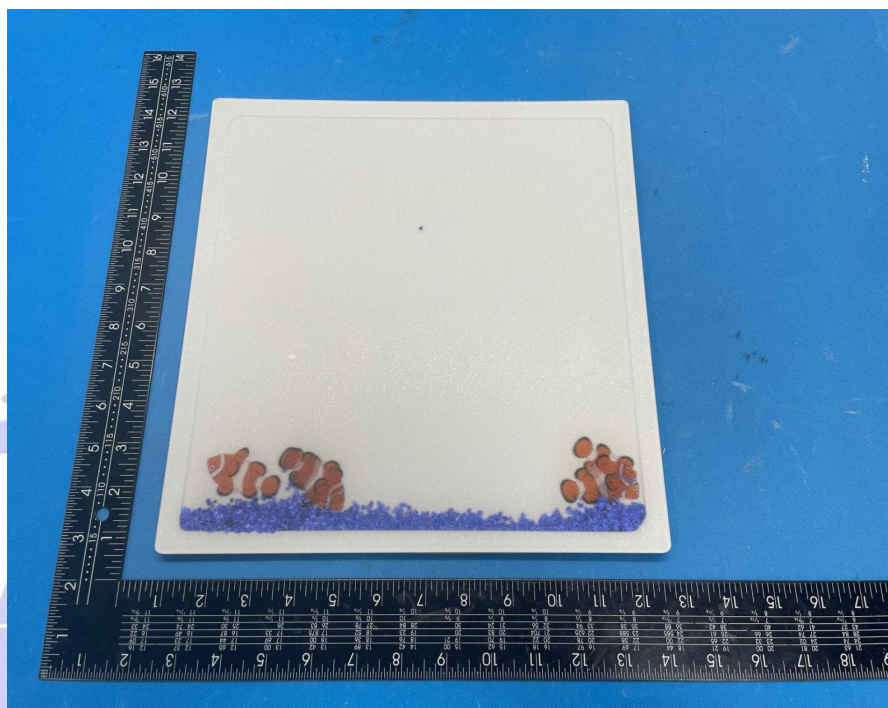


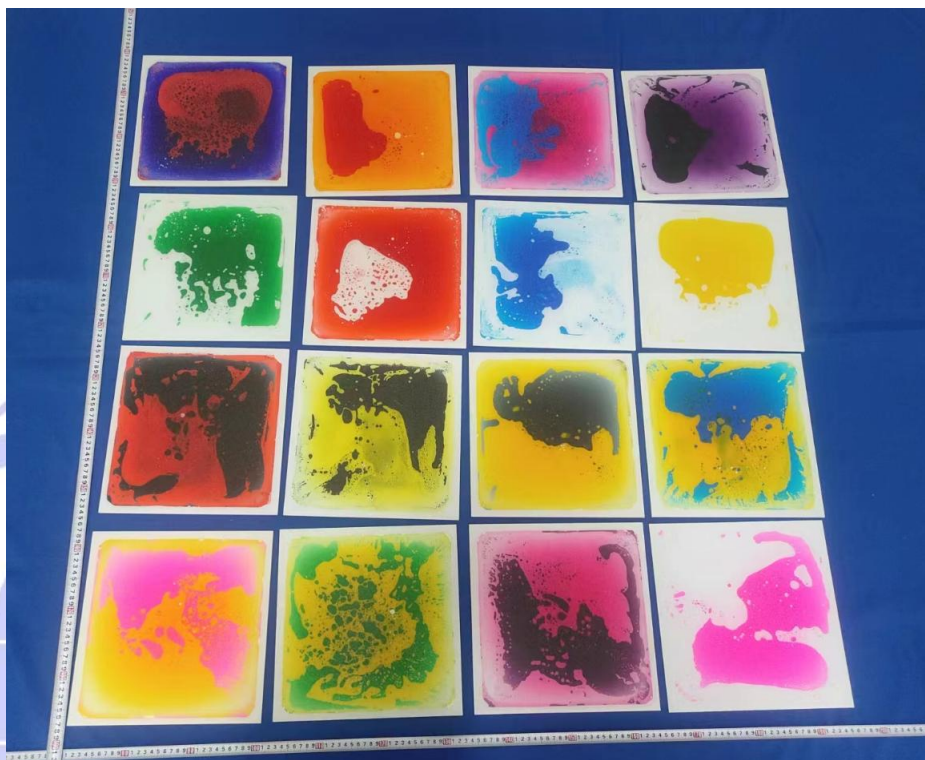
Phthalates Testing Flow Chart



The photo of the sample







***** END OF THE REPORT *****