

FLOWER TACTILE PANEL



Specification,
Installation &
Care Manual

CONTENTS



PACKAGE OVERVIEW

...Page 3

DIMENSIONS

...Page 4 & 5

INSTALLATION

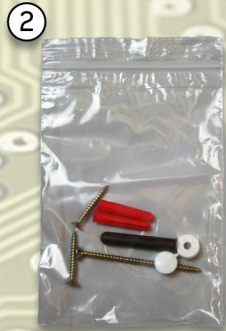
...Page 6

CARE

...Page 7

FLOWER
TACTILE PANEL

PACKAGE OVERVIEW



1. Tactile Panel Assembly
2. Fixing Kit :
 - 30mm Screws (x2)
 - 6mm Wall Plugs (x2)
 - 70mm Screw (x1)
 - 7mm Wall Plug (x1)
 - Screw Cap (x1)

FLOWER
TACTILE PANEL

DIMENSIONS



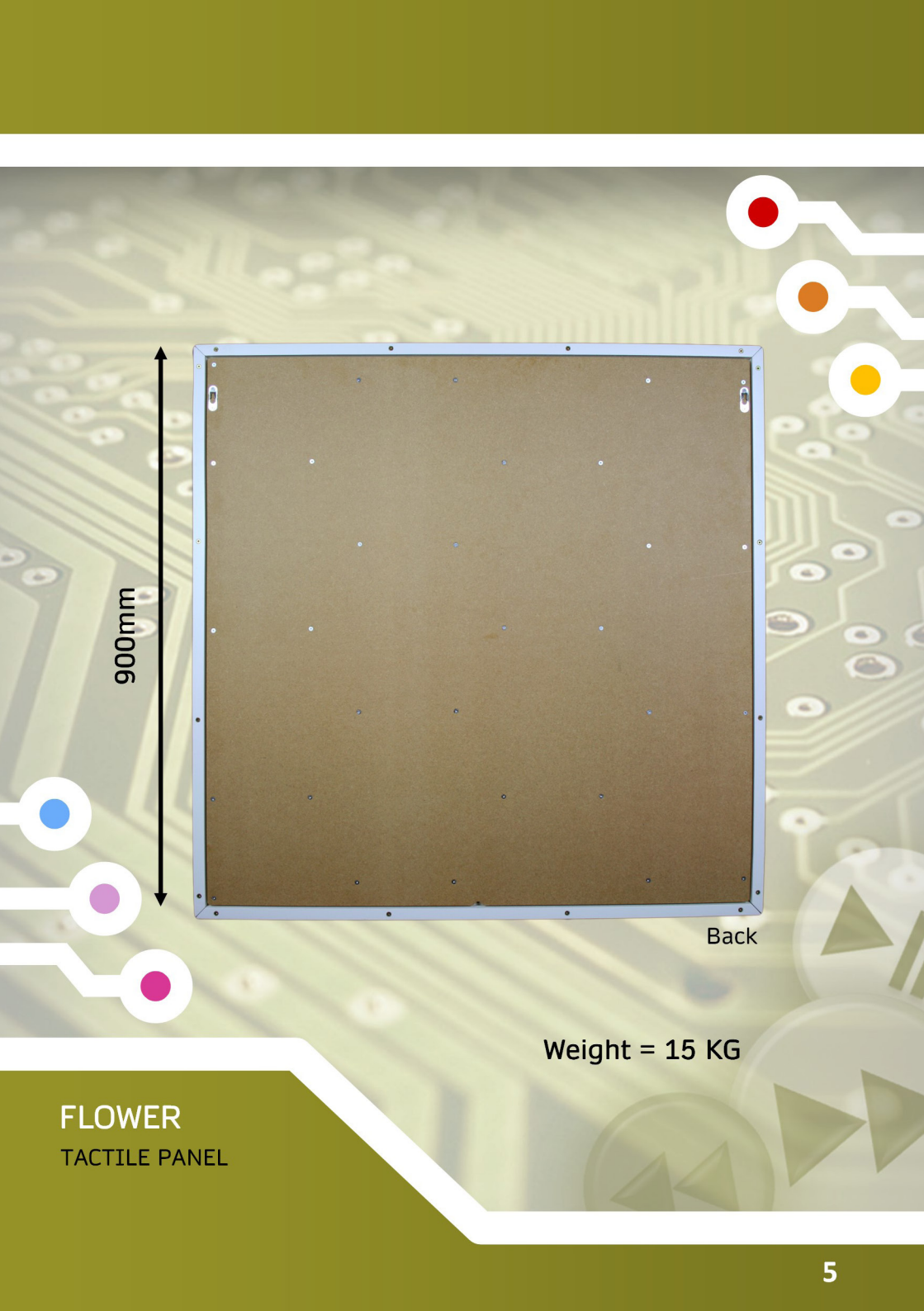
Front

Height = 900mm

Width = 900mm

Depth = 33mm

FLOWER
TACTILE PANEL



900mm

Back

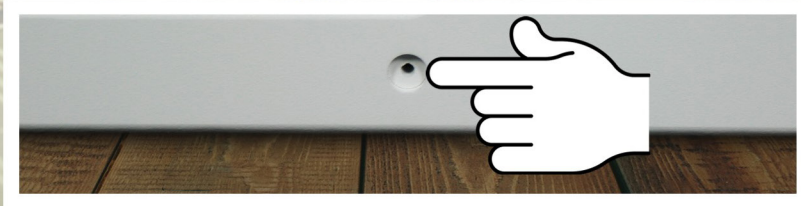
Weight = 15 KG

FLOWER
TACTILE PANEL

INSTALLATION



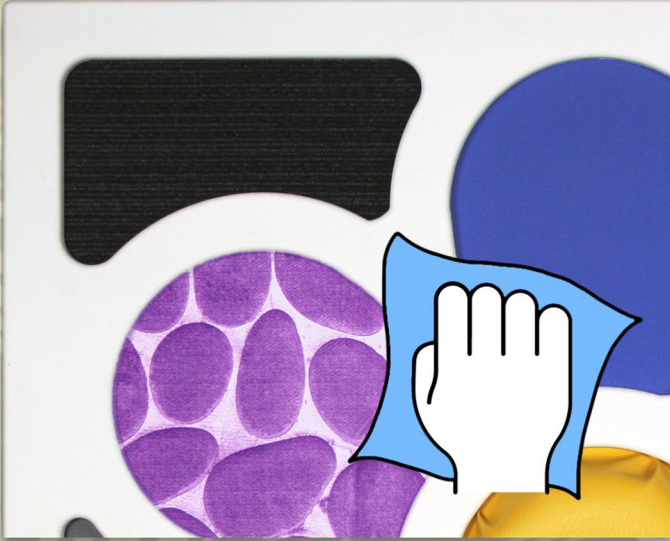
- Locate the hanging brackets on the back of the Tactile Panel Assembly.
- Drill holes in wall 830mm apart and insert 6mm wall plugs.
- Insert 30mm screws into the wall plugs and hang panel.
- Mark a drill point through the fixing hole in the bottom middle of the panel.



- Remove panel and drill marked point, then insert 7mm wall plug.
- Re-hang panel and screw in 70mm screw, along with the screw cap, into the fixing hole.
- Press screw cap closed when finished.

FLOWER
TACTILE PANEL

CARE



If cleaning the product becomes necessary, use only a soft damp cloth.

Do NOT use harsh chemicals or abrasives.

FLOWER
TACTILE PANEL



FLOWER
TACTILE PANEL